

BOARD OF DIRECTORS

CHAIR	
Susan Schafers	780-963-3249
VICE CHAIR	
Levi Hofer	403-892-1877
EFC DIRECTOR	
Ben Waldner	403-579-2180
EFC ALTERNATE	
Joe Kleinsasser	403-653-4480
DIRECTOR	
John Hofer	403-641-2030
DIRECTOR	
Meb Gilani	403-567-8343

STAFF

GENERAL MANAGER	
Susan Gal	ext. 124
MARKETING & COMMUNICATIONS MANAGER	
David Webb	ext. 126
PRODUCER SERVICES MANAGER	
Christina Robinson	ext. 125
INDUSTRY DEVELOPMENT OFFICER	
Jenna Griffin	ext. 129
OFFICE MANAGER	
Laurel Martin	ext. 121
ADMIN ASSISTANT – CUSTOMER SERVICE	
Peggy Galbraith	ext. 101
MARKETING & EVENTS COORDINATOR	
Catherine Kelly	ext. 128
PRODUCER SERVICES ADMINISTRATOR	
Agatha Smykot	ext. 127
FIELD SERVICES ADMINISTRATOR/COORDINATOR	
Dave Lastiwka	ext. 132
FIELD SERVICES COORDINATOR	
Murray Minchin	ext. 131
BUSINESS SYSTEMS ANALYST	
Ron Fowler	ext. 105



Board of Directors Update

Your Egg Farmers of Alberta (EFA) Board of Directors would like to thank their fellow farmers, as well as industry and government representatives, for such an engaging round of Regional Meetings. There were excellent turnouts in Grande Prairie, Edmonton, Calgary and Lethbridge, which demonstrates the dedication of our egg farmers. Thanks to the EFA staff for putting together such a comprehensive agenda, which was full of important information and updates.

The Board shared a variety of updates from Egg Farmers of Canada (EFC), and provided an update about the Avian Influenza and Salmonella Enteritidis (SE) outbreaks. Additional updates were provided about CEIRA, PEEP and animal care, and there was a lively roundtable discussion about quota leasing pool options. The staff shared EFA’s sustainability story with producers, celebrating Alberta’s tradition of being a pioneer in Canada’s egg industry. Finally, the Board would like to thank Vetoquinol for giving a fantastic demonstration about proper techniques for cleaning and disinfecting!

In This Issue – Table of Contents

Page

Egg Price Update	2
Field Statistics Update.....	2
Quota Update.....	2
Provincial Election Results.....	3
The New Reality	3
Submitting Birds for Diagnostics	4
Upcoming Events.....	5
New Entrant Program.....	6
Recent Outbreaks of AI in North America – Is this a Game Changer?	6
EFA Staff Update	7
From Your Industry Development Officer.....	7
The Growing Forward 2 On-Farm Energy Management Program	7
Alberta Egg Market Update.....	9
2015 Marketing Statistics.....	9
Canadian Poultry Sustainability Awards.....	10
Retail Influence on Industry	10



ADDRESS: #101, 90 Freeport Blvd. NE, Calgary, Alberta, T3J 5J9
 PHONE: 403-250-1197 TOLL FREE: 1-877-302-2344 FAX: 403-291-9216
 WEBSITE: www.eggs.ab.ca PRODUCER WEBSITE: www.albertaeggproducers.ca
 EMAIL: info@eggs.ab.ca FACEBOOK: EggFarmersAlberta TWITTER: @EFA_AB_eggs
 OFFICE HOURS: Monday – Friday, 7:30 a.m. – 4:00 p.m.

EFA Vision Statement

Healthy Food, Healthy Farms,
Healthy Families.

EFA Mission Statement

Cultivating a sustainable egg
industry together with farmers,
consumers and other stakeholders.

EFA Office Hours

The EFA office will be **closed**
Wednesday, July 1, 2015 for
Canada Day **and Monday, August**
3rd for the Civic Holiday. We hope
this will not cause any
inconvenience.

Egg Price Update

Effective from **January 4th, 2015:**

Grade A

X Large	\$2.030 ↓
Large	\$2.030 ↓
Medium	\$1.800 ↓
Small	\$1.430 ↓
Nest Run	\$1.911 ↓
Pee Wee	\$0.270 ---

Grade B \$0.750 ---

Grade C \$0.150 ---

*From the minimum paying price,
processors can only deduct charges
as authorized by the EFA Board.
Farm-gate pickup rates were set in
August 2010 and no increase in
individual freight rates have been
approved since that time.*

Field Statistics Update

Here's an update on how our farmers are doing with their on-farm programs so far this year:

- 53 SC-SC layer evaluations have been completed in 2015
 - Alberta's average score: 99.8%
 - 45 Alberta farmers have scored a perfect 100% rating
- 53 Animal Care Program evaluations have been completed in 2015
 - Alberta's average score: 98.6%
 - 40 facilities have received a rating of 100%
- 29 SC-SC pullet evaluations have been completed in 2015
 - Alberta's average score: 98.8%
 - 15 Alberta pullet growers have scored a perfect 100% rating
 - 6 pullet growers are newly accredited in the SC-SC Pullet Program

We'd like to thank our farmers for their commitment and hard work each and every day to ensure that safe, quality eggs are produced humanely.

Quota Update

EFA is pleased to announce a 6.6759% quota allotment effective May 17, 2015. The allocation has been distributed in accordance to EFA's regulations and policies. Notices have been sent to each individual producer with details of the allotment. As you are working to activate your quota, here are some important points to keep in mind:

- Paperwork for reserve to issued transfers or quota leases must be completed and received by the EFA office on or before November 18, 2015. You can request your documentation on the producer website by submitting a completed request form or by contacting the EFA office.
- To accommodate flock cycles and pullet growing, producers have 18 months or until November 18, 2016 to activate their quota from this allotment.
- In order to activate quota, you must have birds available to fill the quota that are within 4 weeks of age of the majority of the flock and must come from a pullet barn, not a layer barn.

10% of this quota allocation was set aside for the New Entrant Program, amounting to 12,653 layers. This means that there are now a total of 13 quota lots available for the New Entrant Program in 2015. The New Entrant Program is currently open and accepting applications until June 25, 2015 at 4:00pm. For more information on this program, visit www.eggs.ab.ca.

Producer Website

Slides from the regional meetings and past copies of EggNotes are available for you to view under the "Information Center" tab.

Visit EFA's Producer Website:
www.albertaeggproducers.ca

EggNotes Subscription Info

Do you know someone who wants to subscribe to *EggNotes*? Simply have them send their name, company or organization, fax number and email address to: info@eggs.ab.ca

Provincial Election Results

On May 5, Albertans elected a majority New Democratic Party government, with Rachel Notley becoming the province's 17th Premier. The historic election brings an end to the 44 year Progressive Conservative reign. Premier Notley announced the cabinet on May 24, with Oneil Carlier being appointed Minister of Agriculture and Forestry (formerly Agriculture and Rural Development).

Egg Farmers of Alberta and the Alberta SM5 look forward to building relationships with the NDP government, especially the new agriculture Minister. EFA is excited to work with a governing party whose federal policy includes the pledge of "maintaining supply managed dairy, eggs and poultry, and the farm incomes they support."

The New Reality

The threat of avian influenza (AI) is here to stay in Alberta, at least through the summer and fall, and likely for the long term, as part of the environment we live and operate our farms in. This means we are entering a new reality, one where egg farmers need to be continually mindful and diligent with their preventative biosecurity practices. We understand that you've seen these biosecurity messages repeatedly, but the importance of carrying out biosecurity each and every day, with every person and input into your barn, cannot be stressed enough. Please take the time to review these biosecurity protocols with each of your farm employees and check regularly to ensure they are being followed:

- Visitor parking is available and clearly marked at least 50 feet away from the barn.
- Your barn door is locked at all times to prevent biosecurity breaches.
- Limit visitors to your barn. Ensure every visitor entering your barn signs your logbook.
- Each farm employee is responsible for ensuring biosecurity is ALWAYS maintained.
- A clearly visible restricted line is in place, preferably with a physical barrier such as a bench.
- Nothing dirty crosses over and touches the clean side of your barn, including boots, clothing and equipment.
- Everyone entering the barn changes boots at the restricted line, paying close attention to avoid cross contamination.
- Wash hands or use hand sanitizer before and after handling birds.
- Be mindful of anything you bring into your barn, including equipment, feed and litter. Could it be contaminated? If so, consider the steps you need to take to manage your risk, such as cleaning and disinfecting equipment, and heating litter to 30 degrees for 48 hours before placing birds in the barn.
- Pests don't follow biosecurity protocols! Ensure an effective pest management program is in place for rodents, flies, beetles and wild birds.
- Deter wild birds from the areas around your barns. Check that all air intakes and roof openings are properly screened. Eliminate any openings or structural features on the barn that may provide a nesting or perching site for wild birds.

Continued on page 4

About EggNotes



EggNotes is the official newsletter of the Egg Farmers of Alberta.

Submissions should be sent to:
info@eggs.ab.ca

Submission deadline for the next issue of EggNotes:
July 31, 2015

Next issue of EggNotes:
August 14, 2015

“Yokes” of the Month



Guaranteed to crack you up!

Q. What does an egg do when he sees a green light?

A. He Egg-celerates!

Q. Where do you find information about eggs?

A. In the hen-cyclopedia!

The New Reality continued from page 3

- If you use an open water source or shallow well for your water supply deter wild birds from accessing your water source, and treat your water, with appropriate levels of product (e.g., chlorine, hydrogen, peroxide, etc.)
- Ensure feed bins are wild bird and rodent proof. If you make your own feed, ensure feed ingredients have not been contaminated with bird faeces. If this is not known or not possible, consider applying a heat treatment to the ingredient.
- If you have a free range flock with access to the outdoors you need to manage your risk as you let your birds outside:
 - Discourage wild birds from co-mingling with your flock by installing deterrents. For deterrents to be effective they must be changed and moved regularly.
 - Do not allow wild birds access to feed or water on your range.
 - If you have screens or netting around your range, ensure that they are secure with no holes.

Submitting Birds for Diagnostics

At our January Regional Meetings we discussed the importance of contacting Poultry Health Services and submitting birds or other samples when experiencing increased mortality in your flocks or an issue with egg shell quality or production. While submitting birds can provide you with useful information for managing your flock, it also helps to create a better body of information about the flock disease and health challenges that are impacting our industry.

In January, we also asked producers about the barriers for submitting birds to the lab for diagnostic testing. Logistics or getting the birds to the lab was identified as the number one issue for producers wanting to submit birds for diagnostics. Below, please find details on how to submit birds to the lab, with a number of options for delivery. We hope this information is helpful to you in making more frequent submissions.

1. Contact Poultry Health Services. Explain the issue you are experiencing and that you would like to submit samples for diagnostics. They will walk you through determining the best birds or sample types to submit.

Continued on page 5

Upcoming Events

June 16

Future Fare (Calgary)

June 17

EFA Research Committee (Calgary)

June 18

All Board's Commissions Meeting (Cochrane)

June 18

EPIC Board Meeting (Calgary)

June 23

Board Meeting (Calgary)

June 24

EFA Production Management Committee (Calgary)

June 29

Farm Safety/OHS Meeting (Leduc)

June 30

Alberta Farmed Animal Health & Welfare Steering Committee (Calgary)

July 6-8

EFC Summer Meeting (Kelowna)

July 28

EFA Board Meeting (Calgary)

Classified Ads



FOR SALE:

350 Lohmann white pullets, 19 weeks on July 31st.

Call Joe @ 403-641-2404 ext 341 or layers@fairvillefarming.ca

Submitting Birds for Diagnostics continued from page 4

2. Complete a submission form. These are available from Poultry Health Services' website or at their office, EFA's producer website, the EFA office or in your Emergency Response Manual.
3. Prepare your submissions by double bagging them, packing them in newspaper and placing in a cardboard box.
4. Ship the birds to the lab. There are three delivery options available:
 - Deliver samples to the lab in Airdrie
 - Ship to Airdrie using Purolator courier
 - Deliver to one of the government lab or offices as noted in the table below and ask them to ship to the Airdrie Agriculture Centre via government courier

Location	Address	Phone #
Purolator Courier	Customer Service Hotline	1-888-744-7123
Airdrie	Agriculture Centre 97 East Lake Ramp NE	403-948-8576
Barrhead	2nd floor Provincial Building 6203 49 Street	780-674-8268
Camrose	4910 52nd Street	780-679-1301
Grande Prairie	1201 Prov Bldg 10320-99 Street	780-538-6208
Leduc	Agri-Food Business Centre 6547 Sparrow Drive	780-980-3534
Lethbridge	Agriculture Centre 5401-1 Ave South	403-381-5849
Stettler	Provincial Building 4705-49 Avenue	403-742-7540
Vermilion	Provincial Building Box 24, 4701-52 Street	780-853-8240

5. If you are delivering to a government lab or office call in advance so they know you are coming. Note: samples typically have to be delivered before 1pm to catch the daily courier

New Entrant Program

Back in January EFA announced that the New Entrant Program would once again be opening in 2015, after welcoming seven new egg farmers into the industry last year. The application window opened on May 1st and applications will be accepted until June 25, 2015.

The NEP was launched in 2012 to assist individuals and families who want to own and operate an egg farm in Alberta by alleviating some of the start-up costs. The NEP provides an excellent opportunity for anyone with a passion for egg farming and a desire to join our industry!

Interested parties must complete and submit a NEP application to the EFA Board of Directors, along with a comprehensive business plan and a \$1,050 fee. Only permanent residents of Alberta who are not current or past quota holders are eligible.

EFA hosted an informative town hall update on May 7th to provide an overview of the NEP. A recording of that call is available on the NEP page of the EFA website, as is additional information about the program. The official New Entrant Program information package is also available for download, which also contains the application form.

Remember, the deadline for applications is June 25, 2015! Please visit our website: www.eggs.ab.ca/industry/new-entrant-program

Recent Outbreaks of AI in North America – Is this a Game Changer?

I would like to use this opportunity to share some personal experiences of the Poultry Health Services veterinary team in dealing with the avian influenza (AI) outbreak in British Columbia and updates that come from the industry in the US.

The virus that is currently causing havoc is highly pathogenic strain that kills the birds fast. This is good news and bad news. The good news is that mortality is a very obvious sign of the infection and cannot be missed. The bad news is that the virus is very aggressive and spreads very easy and fast. Please report all increased mortality of your flocks to your veterinarian and submit birds to the diagnostic lab in Airdrie. Testing for AI will be done for free. Increase all biosecurity to maximum levels. It is a well-known fact that wild birds are responsible for these outbreaks.

The outbreaks in BC and ON, although still devastating for the industry, seems to have been put under control. Our practice was involved in the control of AI in BC – broiler breeder and turkey farms were affected. As a veterinarian it is heartbreaking to deal with producers that lost their entire flock and you cannot help them. However, eliminating infected birds is the only effective way to prevent the spread of the disease. Again, if you suspect AI in your flock, please step forward.

In the US the table layer industry is decimated. Thirty-five million layers have been euthanized in the past months. For the US that is 9% of the national flock. This is affecting the egg prices – they have increased 40%. Turkey flocks are also hard hit. The whole situation is affecting the chick and poultry supply in Canada.

Another wave of outbreaks is expected in the fall as the migratory birds start going south. All estimations are that AI is here to stay. Please make sure you are as prepared as possible.

From your PHS Veterinary team



EFA Staff Update

We would like to welcome Ron Fowler to the EFA staff team.

Ron has just joined EFA in the position of Business Systems Analyst. For the last nine years he has worked in oilfield safety as a CRM Administrator and Network Administrator.

Ron is quite excited to be in the agricultural industry again, having been farm raised on a hog farm just outside of Airdrie before leaving it to seek his fortune under the big city lights of Calgary. Ron's grandfather, Chester Fowler, was considered the longest tenured exhibitor at the Calgary Stampede with his various flocks of sheep and cattle.

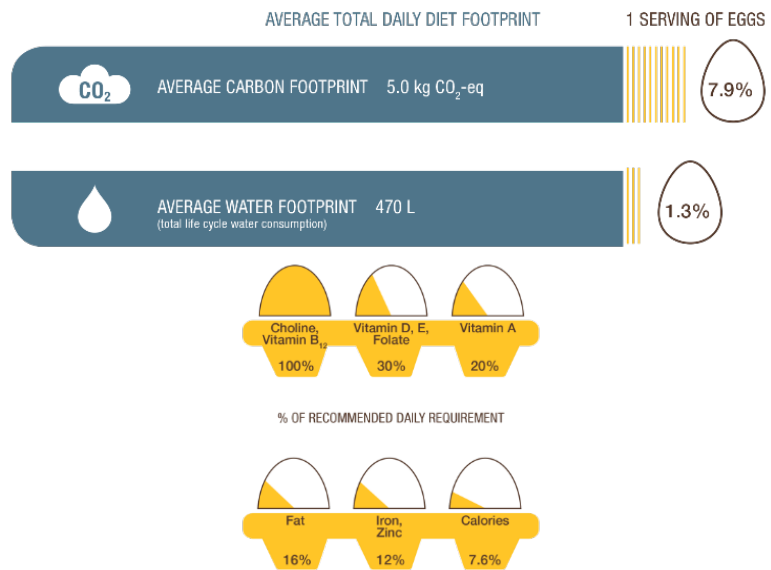
Ron and his wife, Monica, share their home with a very nice dog, Indy. In the summer they enjoy transporting Indy to campsites around Alberta and British Columbia. If not camping, on the weekends Ron will be found tending to his large charcoal BBQ and all his guests' needs. Year round Ron plays bass guitar and attends many concerts and music festivals.

Ron looks forward to working with all the staff at EFA and the Board, to help deliver new and exciting services to all members.

In case you were wondering, he likes his eggs poached, on toast or in a tortilla with peppers and cheese.

From Your Industry Development Officer

Product carbon footprinting helps organizations respond to customers' increasing demands for information on the environmental impact of their food choices. Almost half of consumers actively seek information about the carbon impact of the everyday products they buy. However, there are differences in nutritional value which should be considered when planning a daily diet and comparing the environmental impact of various options. In order to help put the carbon footprint of Alberta eggs into context, EFA worked with Quantis (with funding from Growing Forward) to demonstrate that Alberta eggs provide a large percentage of many important nutrients, while contributing only a small percentage of the environmental footprint of a daily diet. Alberta eggs are a healthy and nutritious choice!



The Growing Forward 2 On-Farm Energy Management Program

Now accepting applications!

On-Farm Energy Management Program provides grant funding to applicants in order to encourage energy efficiency in construction, addition, and renovation of their farm facilities.

For most items the program covers 35% of eligible costs, to a maximum of \$50,000. Some items are funded on a square-footage or formula basis. Lighting, ventilation, boilers, and insulation are just some of the eligible items. The program also covers 100% of the cost for each applicant's first three sub meters. Equipment purchased back to April 1, 2013 may be eligible.

For more information producers can call 310-FARM.

Healthy Communities

Egg Farmers of Canada and the national SM4 are sponsors of the Federation of Canadian Municipalities Annual Conference, which was held in Edmonton this year, from June 5-8. EFA was honored to be included in the high profile event, which attracted mayors and reeves from across Canada. In addition to having a booth at the event, which EFA Directors, Susan Schafers and Joe Kleinsasser, volunteered at, the poultry industry was also proud to host a farm tour for 41 influential leaders. The incredibly successful farm tour was hosted by EFA Egg Ambassador Paul Wurz and Morinville Colony, on June 6, and a fantastic time was had by all in attendance.

Healthy Birds – Tip

Research has found that chickens can make up to 30 different sounds. If you pay attention, you can begin to understand what their sounds mean. For example, if you hear a melodious song coming from the laying facility, your flock is likely peaceful and healthy. Occasional loud screeching can be a sign that you have a feather pecking issue. Unusual sounds like sniffing, or even the lack of sound can be a sign of illness in your flock. If you hear crowing....there is probably a rooster in your hen house! Take the time to listen to your birds and you may be surprised at what you learn!

HEALTHY BIRDS

HEALTHY FARMS HEALTHY EGGS HEALTHY COMMUNITIES

Healthy Eggs – Tip

Basic biosecurity is the key to protecting your flocks. It's the common things you do that can walk disease such as avian influenza into your barn. It is the small things such as ensuring every single person entering your barn changes their boots properly that will be your best protection against these risks.

Healthy Farms – Tip

Producers have questions about manure best management practices – we've compiled a list of common ones and their answers for you!

Q: What is the difference between temporary and permanent manure storage?

A: There are times, like when manure is being stored in preparation for the spreading process, that producers use a spot in a field as short-term solid manure storage. These sites are subject to AOPA regulations. According to AOPA, a short-term or temporary, solid manure storage site is defined as one in which manure is stored for an accumulated total of no more than seven months over a period of three years. If a site stores solid manure more than seven months within three years, the manure needs to be moved to a new spot on the field. If it is stored for more than seven months without land application, or the site is not moved from year to year, the site is considered permanent and appropriate construction requirements must be met. This means the base needs to be either a concrete slab or well-compacted soil high in clay, but low in sand or gravel (natural or constructed clay liner).

Q: How can I tell if I have a clay liner?

A: This option depends on the geology of your site. Some parts of the province provide natural protection to groundwater as a result of naturally occurring clay layers between the manure storage and the groundwater resource. You would need to know both your soil type and the depth of your water table. A core sample can help you with this. Compacted clay liners are used when a naturally occurring protective layer below the storage does not exist but there is sufficient clay in the area that can be compacted to create a protective layer.

Continued on page 9

EFA Online!

The EFA consumer website has been completely redesigned to have a stronger egg theme, shine a spotlight on our farmers, and provide consumers with much more of the information they are seeking!

Get Cracking to: www.eggs.ab.ca



Like us on Facebook!

facebook.com/EggFarmersAlberta



Follow us on Twitter!

twitter.com/EFA_AB_eggs

Alberta Egg Market Update

The Nielson retail sales data is available up to May 2nd, 2015 and indicates that in the latest 4-week period, 2.62 million dozen eggs were sold in Alberta; a 6.2% decrease from the previous 4-week period (ending April 4th) and a 9.3% decrease in sales compared to the same period in 2014.

Nielson retail sales in the last 52 weeks are up 0.5% over the previous 52 weeks in Alberta, to 35.59 million dozen eggs! Specialty eggs (excluding Omega-3 eggs) have seen the largest sales growth in the last 52 weeks in Alberta; a 19.8% increase over the previous 52 weeks, to 2.61 million dozen eggs (7.3% of the total eggs sold in AB).

Healthy Farms - Tip continued from page 8

Q: Why should I dry my manure?

A: The availability of moisture allows uric acid to break down to produce ammonia (NH₃). The use of belt and drying systems in conjunction with sheltered manure storage minimizes the loss of nitrogen (N) to the atmosphere by inhibiting this conversion. This means that barn air quality is improved due to reduced NH₃ emissions. Dried manure also weighs less, becomes easier to transport and requires less storage space. If you have a belt drying system you will need a heat exchanger for proper manure drying in the winter.

Q: Why is covered storage recommended?

A: Covering the manure pile will reduce the risk of contaminated runoff from the storage area. If your storage cannot be covered, or if runoff is an issue, try to collect and contain the runoff by constructing a catch basin or filter. If you are drying your manure, keeping it free from moisture also helps reduce exterior ammonia emissions. Ammonia (NH₃) is a greenhouse gas and contributes to global warming. Even if kept dry during storage most of the NH₃ is released from solid manure within a few hours of spreading. If you are trying to limit emissions or get the most nitrogen (N) value, the last step is rapid incorporation into the soil or the use of a slot injector.

Q: In terms of covered storage, if I don't want to use my barn or anything attached to my barn for biosecurity reasons what options do I have?

A: One simple option is covering the manure pile with heavy plastic. If this becomes labour intensive, or volumes are too large, another option is building a simple roof over a concrete pad. Some producers have a structure with four separate walls from their layer barn and a conveyor that shuttles the manure into the storage.

2015 Marketing Statistics

- Total # of events attended: 11
- Total # of events sponsored: 58
- Total # of school & health presentations: 55
- Total # of resources distributed: 50,058
- Total # of promotional items distributed: 48,150
- Total # of visits to EFA website: 28,980
- Total # of pages viewed on the EFA website: 60,963

Canadian Poultry Sustainability Awards

Canadian Poultry has announced its 2nd annual Sustainability Symposium & Award. The awards recognize farmers for strong animal care and environmental stewardship practices. Alberta's very own Levi Hofer and New York Colony were the winners of CP's inaugural sustainability awards, for both Canada's table egg industry and overall poultry industry!

Canadian Poultry is looking for farmers that are efficient and innovative in their production of high quality poultry products, and are committed to sustainable farming practices. They want to shine the spotlight on Canadian farmers who protect and improve the environment, as well as the economic and social well-being of their poultry operation, their family and the community they call home.

EFA encourages Alberta egg farmers to step forward and apply for this prestigious honor. Winners will receive \$2,000 cash, a trophy, and a sign to display proudly at your farm gate! The application deadline is July 31st. This year's judges include Valerie Carney, Michael Lefrancois, Al Dam, Hank Classen, PH.D., Helen Wojcinsky, and Helen Anne Hudson.

To find out more information about the awards and to apply, please visit: www.agannex.com/canadian-poultry-sustainability/event/awards

Retail Influence on Industry

Over the last few years consumers have become increasingly concerned about where their food comes from and how it was grown or raised. Wal-Mart recently became the first major retailer to announce an animal welfare position related to the responsible use of antibiotics in farm animals. Wal-Mart is endorsing the universally accepted 'Five Freedoms' of animal welfare, along with voluntary guidelines to limit the use of antibiotics by its suppliers, including egg farmers.

More specifically, Wal-Mart is asking suppliers to:

- Adopt the Judicious Use Principles of Antimicrobial use from the AVMA, which includes veterinary oversight, accurate record keeping and limiting use to animals that are ill or at risk
- Promote transparency by providing annual reports on antibiotic management to Wal-Mart and the public

"Our customers want to know more about how their food is grown and raised, and where it comes from," said Kathleen McLaughlin, President of Wal-Mart Foundation and Senior Vice President of Wal-Mart Sustainability. "We appreciate the leadership our suppliers have shown to help us accomplish these goals."

This is just the latest reminder of the influence consumers have over retailers, and the impact retailers can potentially have on the industry. The Canadian egg industry already limits antibiotic use in layers and category-1 antibiotics are prohibited in Canada.

Upcoming Events

Come visit the EFA booth at these EGGcellent events:

- **Calgary Stampede**
Stampede Park

July 2 – 12, 2015

